

# MOVE

# MPX 12-12

12V-15Ah - Cyclic AGM Battery

**XTRA CAPACITY  
XTRA LIFETIME  
XTRA MILEAGE**

## APPLICATIONS

Powerchairs / home mobility equipment  
Scooters, 3- and 4 wheels  
Toys for children  
Lifts (stairs / bathrooms)  
Personal Carriers  
Utility Vehicles

## SPECIFICATIONS

Nominal Voltage	12V	
Nominal capacity @20 hour rate	15Ah	
Capacity at 25°C	10 hour rate	13Ah
	5 hour rate	12Ah
	1 hour rate	8Ah
Shelf time @20°C up to 70%	in months	9
Internal resistance (at 1 KHz)	approx. 10 mΩ	
Operating temperature for (dis)charge	-15°C to + 40°C	

## DIMENSIONS

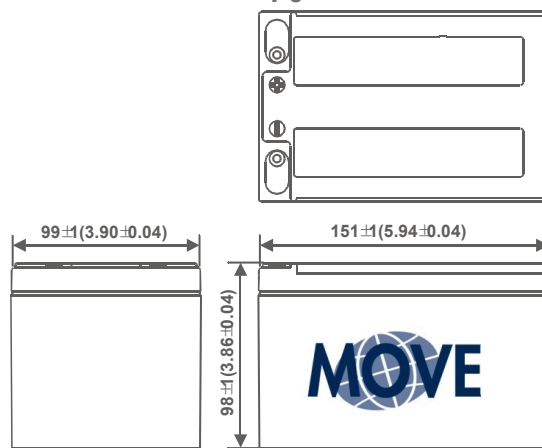
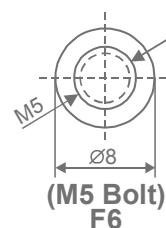
Dimensions LxWxH (T) in mm	151x99x96 (101)
Weight	4,5kg (±2%)
Separator	AGM, <b>Advanced Glass Matt</b>
Case and cover	ABS (UL94-V0 optional)
Terminal	M5 Bolt (optional, F2 Faston)
Torque setting (recommended)	M5: 2,9 Nm
Maximum allowable torque value	M5: 4,9 Nm

## CHARGING

Charging Voltage cycle use 14,4 to 15 Volt  
Float charge Voltage 13,5 to 13,8 Volt  
Charging current, minimum 1,5A - maximum 3A

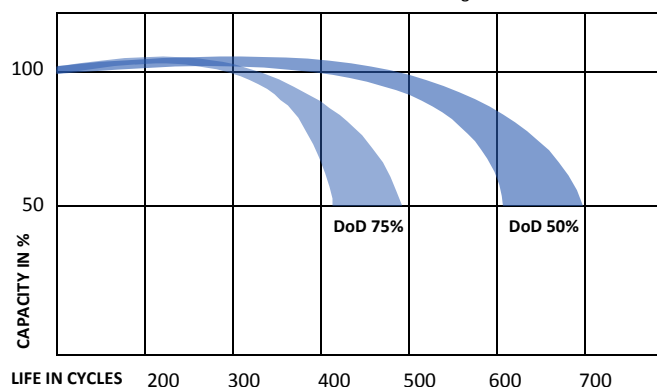
## CYCLE LIFE

To maximize the cycle life of the battery, we recommend to charge the battery fully after use. The total life of the battery, is very dependant on the correct charge and depth of discharge per cycle.



## BATTERY LIFE UNDER CYCLIC USE

Tested in conformance to the BCI testing method



\* Cycle life is measured with a discharge current 0,2C, charged 16h and rest capacity of 2/3 Cn